



2 Brindley Place, Uxbridge, UB8 2FA

- One bedroom apartment
- Modern walk-in wardrobe
- Gated with concierge.
- EPC Rating - B
- Truly stunning property
- Two separate toilets
- One of the largest apartments within the development
- Student friendly
- Available early March 2026
- Canal-side development

£1,395 PCM



Cameron Estate Agents
195 High Street,
Middlesex, Uxbridge, UB8 1LB

E: uxbridge@cameron.co
T: 01895252000

www.cameron.co

Whilst every care has been taken to ensure the accuracy of these particulars, none of the statements contained herein are to be relied upon as representations of fact. These particulars do not constitute an offer or contract.

Description

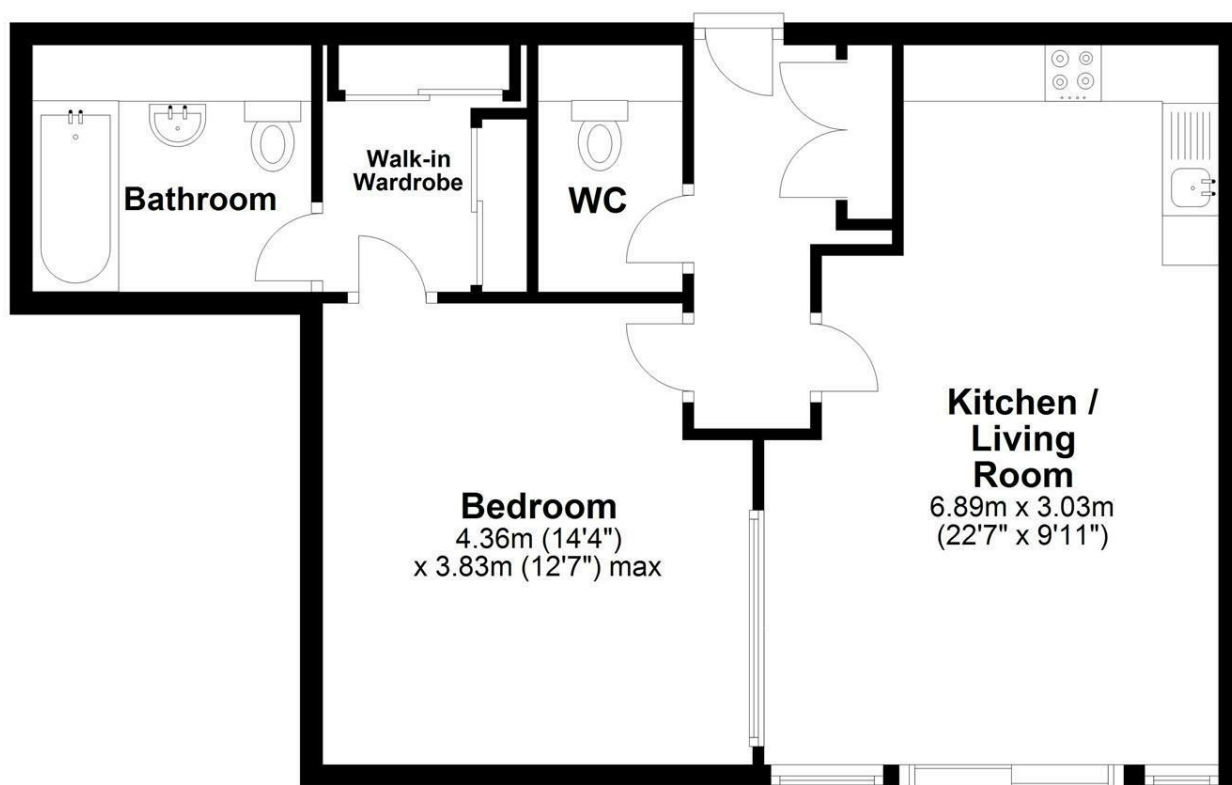
Cameron are delighted to offer yet another STUNNING, one bedroom apartment located in this three year old, luxury development. The property offers a integrated kitchen, spacious bedroom, amazing walk-in wardrobe, under-floor heating, parking, stylish finishing through-out, concierge and located walking distance to Brunel University and local transport links. Presented to the market furnished and available early March 2026 - CALL NOW FOR A VIEWING.

IMPORTANT NOTICE

These particulars have been prepared upon information supplied by the Vendor and should be verified by your surveyors and solicitors. In accordance with the Property Misdescriptions Act 1991 we have prepared these sales particulars as a general guide to give a broad description of the property. They are not intended to constitute part of an offer or contract. We have not carried out a structural survey and the services, appliances and specific fittings have not been tested. All photographs, measurements, floor plans and distances referred to are given as a guide only and should not be relied upon for the purchase of carpets or any other fixtures or fittings. Lease details service charge and ground rent (where applicable) are given as a guide only and should be checked and confirmed by your solicitor prior to exchange of contract

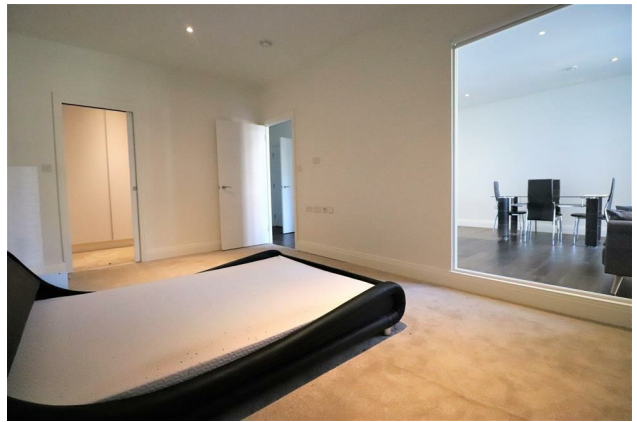
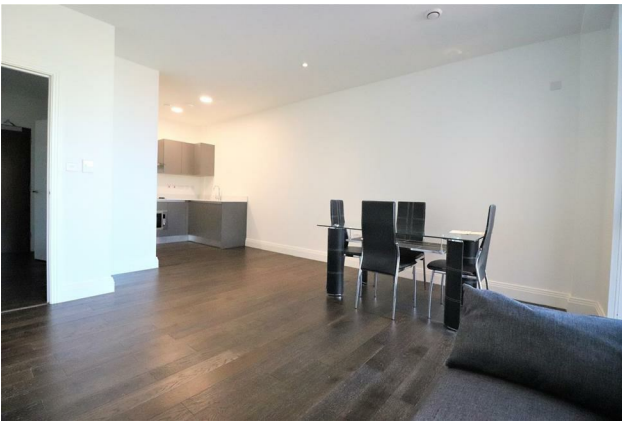
First Floor

Approx. 60.9 sq. metres (655.9 sq. feet)



Total area: approx. 60.9 sq. metres (655.9 sq. feet)

Cameron



Whilst every care has been taken to ensure the accuracy of these particulars, none of the statements contained herein are to be relied upon as representations of fact. These particulars do not constitute an offer or contract.